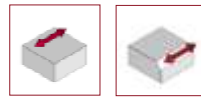


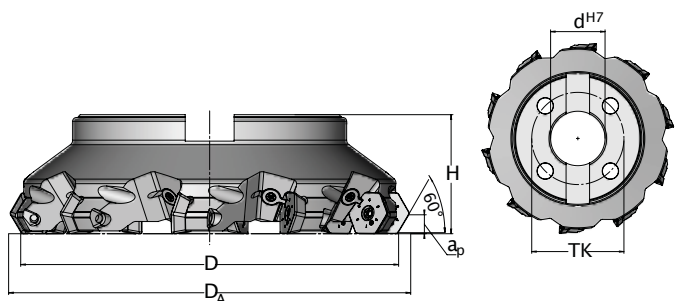
FACE MILLING CUTTERS

HD60



NEWTool

For universal use in cast iron and steel machining
Excellent surface quality due to wiper geometry
Variable clamping wedge system suitable for long- and short-chipping materials.



HD60

Plug-in milling cutters

Article	D	D _A	d ^{H7}	H	z _{eff}	a _p	Wedge	TK	lc	kg	INS
03H.1263.100	125	137.8	40	63	7	10	yes	-	no	3.23	HD..2207.N
03H.1663.100	160	172.8	40	63	9	10	yes	66.7	no	5.26	HD..2207.N
03H.2063.100	200	212.8	60	63	10	10	yes	101.6	no	8.57	HD..2207.N

Wedge set



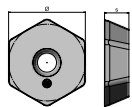
08Z.0000.358

08K.1008.010

08Z.0000.093

TX225

INS SHAPE HD


HD

AS	Ø	s
6	22	07
	22	7

Matching of machining parameters
with the AV material groups

Article	Designation	Recomm. a_e $0,7 \times D$	Steel						
			A22	A21	A20	A19	A18	A17	A16
HD..2207..	HD.2207.002.01 SKY77 HDHW 2207M0 SN-23	h_{max}	0.65	0.60	0.55	0.50	0.45	-	-
		v_c	280-320	240-280	210-240	180-210	140-180	-	-
HD..2207..	HD.2207.004.01 SKY77 HDHT 2207M0 SN-28	h_{max}	-	-	0.50	0.45	0.40	0.35	0.30
		v_c	-	-	210-240	180-210	140-180	110-140	80-110

Article	Designation	Recomm. a_e $0,7 \times D$	Cast iron					
			D21	D20	D19	D18	D17	D16
HD..2207..	HD.2207.002.01 SKY77 HDHW 2207M0 SN-23	h_{max}	0.65	0.60	0.55	0.50	0.45	-
		v_c	280-320	260-290	240-280	210-240	180-210	-
HD..2207..	HD.2207.002.01 NERO ² 77 HDHW 2207M0 SN-23	h_{max}	0.65	0.60	0.55	0.50	0.45	-
		v_c	300-340	280-320	240-280	210-240	180-210	-
HD..2207..	HD.2207.002.01 CAN ² 77 HDHW 2207M0 SN-23	h_{max}	0.65	0.60	0.55	0.50	0.45	-
		v_c	320-380	300-340	260-300	210-240	180-210	-
HD..2207..	HD.2207.004.01 SKY77 HDHT 2207M0 SN-28	h_{max}	-	-	-	0.45	0.40	0.35
		v_c	-	-	-	210-240	180-210	140-180

INS

HD..2207...



08B.0514.7991



TX220