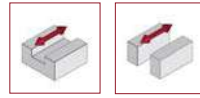


SLITTING CUTTERS

GB18



NEWTool

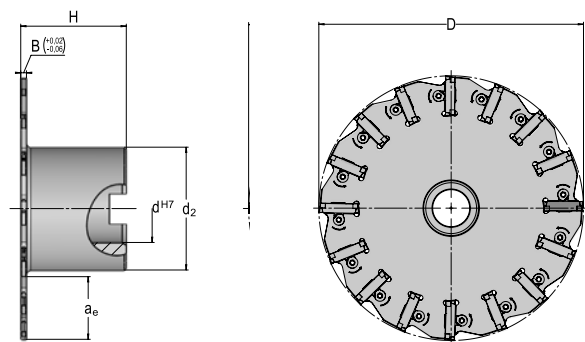
Double-edged indexable insert

Cutting widths from 2 mm

Narrow tooth pitch due to space-saving clamping doll

Excellent cutting force dissipation

High tooth feeds



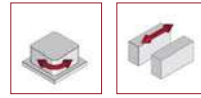
GB18

Article	D	d ₂	d ^{H7}	H	B	zz	a _e	lc	kg	INS
01GB.0820.020	80	40	22	40	2	8	18.0	no	0.36	GNO1920
01GB.0825.020	80	40	22	40	2.5	8	18.0	no	0.37	GNO1925
01GB.0830.020	80	40	22	40	3	8	18.0	no	0.38	GNO1930
01GB.0835.020	80	40	22	40	3.5	8	18.0	no	0.40	GNO1935
01GB.1020.020	100	45	27	45	2	12	25.0	no	0.50	GNO1920
01GB.1025.020	100	45	27	45	2.5	12	25.0	no	0.51	GNO1925
01GB.1030.020	100	45	27	45	3	12	25.0	no	0.55	GNO1930
01GB.1035.020	100	45	27	45	3.5	12	25.0	no	0.57	GNO1935
01GB.1220.020	125	58	32	50	2	16	31.0	no	0.91	GNO1920
01GB.1225.020	125	58	32	50	2.5	16	31.0	no	0.94	GNO1925
01GB.1230.020	125	58	32	50	3	16	31.0	no	0.98	GNO1930
01GB.1235.020	125	58	32	50	3.5	16	31.0	no	1.02	GNO1935
01GB.1625.020	160	68	40	63	2.5	22	43.0	no	1.59	GNO1925
01GB.1630.020	160	68	40	63	3	22	43.0	no	1.66	GNO1930
01GB.1635.020	160	68	40	63	3.5	22	43.0	no	1.72	GNO1935

*Other dimensions on request.

SLITTING CUTTERS

GN18



NEWTool

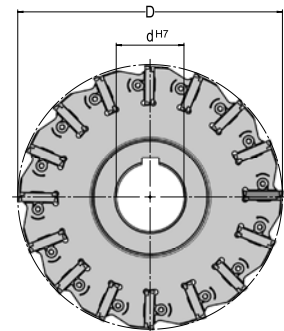
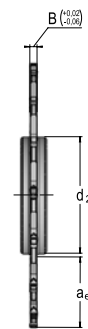
Double-edged indexable insert

Cutting widths from 2 mm

Narrow tooth pitch due to space-saving clamping doll

Excellent cutting force dissipation

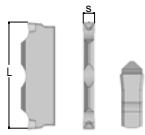
High tooth feeds



GN18

Article	D	d ₂	d ^{H7}	H	B	zz	a _e	lc	kg	INS
14GN.0820.020	80	34	22	12	2	8	21.0	no	0.11	GNO1920
14GN.0825.020	80	34	22	12	2.5	8	21.0	no	0.13	GNO1925
14GN.0830.020	80	34	22	12	3	8	21.0	no	0.14	GNO1930
14GN.0835.020	80	34	22	12	3.5	8	21.0	no	0.16	GNO1935
14GN.1020.020	100	45	27	12	2	12	27.0	no	0.19	GNO1920
14GN.1025.020	100	45	27	12	2.5	12	27.0	no	0.20	GNO1925
14GN.1030.020	100	45	27	12	3	12	27.0	no	0.23	GNO1930
14GN.1035.020	100	45	27	12	3.5	12	27.0	no	0.26	GNO1935
14GN.1220.020	125	55	32	12	2	16	32.0	no	0.29	GNO1920
14GN.1225.020	125	55	32	12	2.5	16	32.0	no	0.34	GNO1925
14GN.1230.020	125	55	32	12	3	16	32.0	no	0.36	GNO1930
14GN.1235.020	125	55	32	12	3.5	16	32.0	no	0.40	GNO1935
14GN.1625.020	160	68	40	12	2.5	22	44.0	no	0.54	GNO1925
14GN.1630.020	160	68	40	12	3	22	44.0	no	0.58	GNO1930
14GN.1635.020	160	68	40	12	3.5	22	44.0	no	0.64	GNO1920

*Other dimensions on request.

INS SHAPE **GNO**

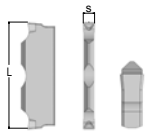
GNO					
AS	L	s			
2	19	20	25	30	35
	19	1.97	2.47	2.97	3.47

Matching of machining parameters
with the AV material groups

				Steel						
	Article	Designation		A22	A21	A20	A19	A18	A17	A16
GNO.1920..	GNO.1920.010.01 AV1055	GNOHR 192003 N	h_{max}	0.12	0.10	0.10	0.08	0.08	0.06	0.05
			v_c	280-320	240-280	210-240	180-210	140-180	110-140	80-110
GNO.1925..	GNO.1925.010.01 AV1055	GNOHR 192503 N	h_{max}	0.12	0.10	0.10	0.08	0.08	0.06	0.05
			v_c	280-320	240-280	210-240	180-210	140-180	110-140	80-110
GNO.1930..	GNO.1930.010.01 AV1055	GNOHR 193003 N	h_{max}	0.14	0.12	0.12	0.10	0.10	0.08	0.06
			v_c	280-320	240-280	210-240	180-210	140-180	110-140	80-110
GNO.1935..	GNO.1935.010.01 AV1055	GNOHR 193503 N	h_{max}	0.16	0.16	0.16	0.14	0.12	0.10	0.08
			v_c	280-320	240-280	210-240	180-210	140-180	110-140	80-110

				Cast iron					
	Article	Designation		D21	D20	D19	D18	D17	D16
GNO.1920..	GNO.1920.010.01 AV1055	GNOHR 192003 N	h_{max}	0.12	0.12	0.10	0.10	0.08	0.06
			v_c	280-320	260-290	210-260	190-240	180-210	140-180
GNO.1925..	GNO.1925.010.01 AV1055	GNOHR 192503 N	h_{max}	0.12	0.12	0.10	0.10	0.08	0.06
			v_c	280-320	260-290	210-260	190-240	180-210	140-180
GNO.1930..	GNO.1930.010.01 AV1055	GNOHR 193003 N	h_{max}	0.14	0.14	0.12	0.12	0.10	0.08
			v_c	280-320	260-290	210-260	190-240	180-210	140-180
GNO.1935..	GNO.1935.010.01 AV1055	GNOHR 193503 N	h_{max}	0.18	0.18	0.15	0.13	0.10	0.08
			v_c	280-320	260-290	210-260	190-240	180-210	140-180

INS SHAPE GNO



GNO					
AS	L	s			
2	19	20	25	30	35
	19	1.97	2.47	2.97	3.47

Matching of machining parameters
with the AV material groups

Article	Designation		Stainless steels				NF metals			
			C12	C11	C10	C09	E82	E81	E80	
GNO.1920..	GNO.1920.010.01 AV1055	GNOHR 192003 N	h_{max}	0.10	0.08	0.07	0.05	0.15	0.12	0.10
			v_c	120-200	140-150	100-140	60-100	650-1000	450-650	280-450
GNO.1925..	GNO.1925.010.01 AV1055	GNOHR 192503 N	h_{max}	0.10	0.08	0.07	0.05	0.15	0.12	0.10
			v_c	120-200	140-150	100-140	60-100	650-1000	450-650	280-450
GNO.1930..	GNO.1930.010.01 AV1055	GNOHR 193003 N	h_{max}	0.10	0.08	0.07	0.05	0.17	0.15	0.10
			v_c	120-200	140-150	100-140	60-100	650-1000	450-650	280-450
GNO.1935..	GNO.1935.010.01 AV1055	GNOHR 193503 N	h_{max}	0.12	0.10	0.08	0.07	0.20	0.18	0.15
			v_c	120-200	140-150	100-140	60-100	650-1000	450-650	280-450

INS		
GNO1920	08Z.0000.522	TX208
GNO1925	08Z.0000.520	TX208
GNO1930	08Z.0000.523	TX208
GNO1935	08Z.0000.524	TX208

Mounting | GNO
indexable insert page 140